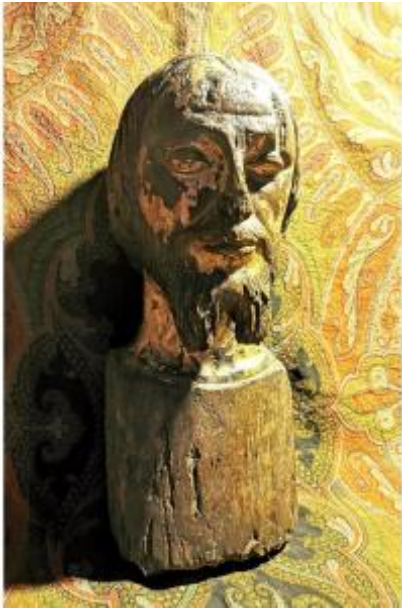




## Ancient Late Gothic Sculpture - Bust / Religious Head - Late 15th Century, Renaissance



4 800 EUR

Signature : Maître sculpteur

Period : Before 16th century

Condition : En l'etat

Material : Solid wood

Width : 19cm

Height : 46 cm

Depth : 19 cm

<https://www.proantic.com/en/1078274-ancient-late-gothic-sculpture-bust-religious-head-late-15th-century-renaissance.html>

### Description

Bust of a Man Late 15th - Early 16th Century,  
Sculpture in Oak with Traces of Polychromy

Rare sculpture of a man's head in dense oak, dated from the end of the 15th century (around 1490-1510), a pivotal period in the transition between the flamboyant Gothic style and the Renaissance, influenced by Italian art.

This bust of a man with a serene face, perhaps an apostle, a notable or Christ, presents meticulous and expressive work, typical of sculptors of the late Gothic period. The wavy texture of the hair and beard, the marked eyebrow arches, as well as the realistic depth of the facial features testify to the progressive humanization of faces in the statuary of the late Middle Ages, where more

### Dealer

**Galerie David SEGALA**

Dealer specialized in art objects

Tel : 0466477424

Mobile : 0680322750

3 Rue Fontanilles B-f6

Mende 48000

attention was given to pay attention to individuality. . in sculpture, and in realism too.

An expertise from the Parisian laboratory Xylo-Data S.A.R.L., carried out by Dr Victoria Asensi Amoros, specialist in wood micrography, confirms the geographical origin of the tree in the Meuse and dates this work between the end of the 15th and the beginning of the 16th century. century . The study report dated 06/23/2024 will be provided with the sculpture.

State of conservation:

Some discreet gaps on the face and traces of xylophagous attacks, slight retouching on the base. These imperfections do not detract from the artistic appeal of the work; on the contrary, they highlight his journey through the ages, witnessing the troubles of history, including wars and revolutionary revolts.

Dimensions:

- Total height: 46 cm
- Base width: 19 cm
- Head dimensions: width 17 cm x depth 19 cm
- Weight: 4.6 kg

A rare work, steeped in history, which illustrates the artistic evolution between Gothic and Renaissance.

Ideal for a passionate collector or as a centerpiece in the decoration of an interior, this sculpture alone embodies the essence of the artistic transition to the Renaissance. Its calm expression and the finesse of its details make it a fascinating art object, which captures the attention and adds a unique historical depth. Installed in a library, a living room or an office, it will bring a prestigious character and an aura of authenticity, enriching your space with a rare work steeped in history.

- General conditions of sale -

If possible, Payment should be made (+ or -)  
2/3 days after the order.

1st - 4 - Types of Payment accepted: (+  
Transport-packaging costs depending on the  
area).

(1) - PAYPAL: Simple, Fast, Guarantee and  
insurance.

(2) - TRANSFER: Iban Bank: BPS FR76 1660  
7002 7109 3346 0201 534. (recommend)

(3) - CHECK: Only French: ANTIQUE  
DEALER David SEGALA 3 Rue Fontanilles Bat  
f6 48000 MENDE-Occitanie.

(4) - CASH: Advisor by hand, shipments are  
always at your own risk, we will not accept any  
complaints.

- 5 packaging costs + transport :

(a) France : EUR80

(b) EU Union, Switzerland : EUR90

(c) Eastern Europe (outside the EU and  
Switzerland), Norway, Maghreb : EUR120

(d) Africa excluding Maghreb, Canada, United  
States, Near and Middle East : EUR130

(e) Asia, Oceania, Rest of the World : EUR150

2nd - 2 types of Shipping-Delivery possible:

1st) - By Carriers: DHL, Colissimo, Poste...  
(always with Tracking Number)

(The packages are always packaged by me  
(with Care and Overprotection) and entrusted to  
the carrier at (+ or -) 3/4 working days after  
payment into my account of the total with costs,  
Any customs duties requested by the country  
from the customer upon arrival are due by the  
buyer.

2nd) - 3 Possibilities of personal delivery subject  
to collection in full or payment of Deposit.

(issue of an essential receipt by return email  
and must be given upon delivery or collection).

(1) - Welcome you with joy to MENDE in LOZERE-Occitanie-France for a little stroll and collect your property (no fees).

(2) - For Merchants only I am on the Inter-Nations-Professional Bimonthly Unpackings of CIPOLAT-S.A. in Montpellier Parcs des Expositions HALL-B4 STAND-5315/16. (Items can be collected from my stand 5315/16 before noon) no charge.

(3) - Possibility of possible delivery: by us in France and neighboring countries on request and delivery of movable objects in person, only for important and very fragile pieces. (and according to our availability and payment in full and in advance: price + transport).

- Possible Discount: Discount granted to the Good customer or for a lot: on request by SMS message: 0680322750 or email: [segala.david.antiquaire48000@orange.fr](mailto:segala.david.antiquaire48000@orange.fr)

Yours sincerely David

SEGALA