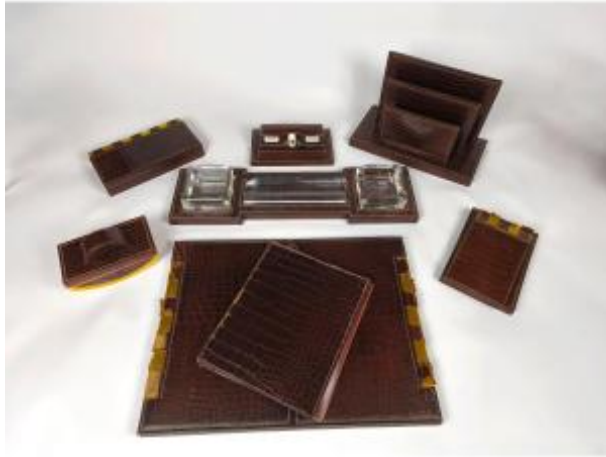




## Hermès X Paul Dupré Lafon: Exceptional Crocodile Leather Office Set. 1950s

7 200 EUR



Signature : Paul Dupré-Lafon x Hermès

Period : 20th century

Condition : A restaurer

Material : Leather

Length : 34 cm

Width : 45 cm

<https://www.proantic.com/en/1455914-hermes-x-paul-dupre-lafon-exceptional-crocodile-leather-office-set-1950s.html>

### Description

Exceptional office set by Paul Dupré-Lafon made by Hermès, comprising eight pieces in brown crocodile.

This set belonged to a manager of the Hermès house during the 50s - 60s.

Each piece is in brown crocodile, marked in gold "Hermès // Paris".

The set is in used condition with pieces in good general condition and others requiring restoration.

It is composed of:

- . A mail organizer in good condition
- . A document holder, split at the fold, the

### Dealer

#### Anxtique

Objets d'art du XVIIIe au XXe siècle, orfèvrerie et objets de vitrine

Mobile : 0607711514

Fax : [anxtique@gmail.com](mailto:anxtique@gmail.com)

Paris 75000

bookmark strap also cracked at the curvature.

. A manual perpetual calendar, in good condition.

. A desk pad requiring restoration of the leather "hinges". Held with tape.

. A pen holder and ashtray or pocket emptier in good condition, except for a chip on each glass piece.

. A blotter in good condition, with original papers

. A notepad holder requiring restoration of the "hinge"

. A magnificent large box, the interior in wood, in good condition with a little wear at the level of the leather "hinges".

A graduate of the Fine Arts of Marseille in 1923, Dupré-Lafon very quickly found his clientele, fond of his art deco style using luxurious materials and clean lines. He designed the headquarters of the Weill house in 1924 and that of a private mansion on the Parc Monceau, for which he began his collaboration with Hermès. This would last until the 1960s, in particular for many office accessories such as our rare crocodile example.

Paul Dupré-Lafon's office accessories are highly sought after and our example is remarkable for the use of crocodile leather and the large number of pieces it consists of.

This set deserves a beautiful restoration for the few damaged pieces and will then be able to adorn your office with luxury and voluptuousness.

45 x 34 cm for the desk pad

19.5 cm high for the mail holder

22.5 x 12 x 3.5 for the box

About 10 kg for the set.

Good condition or requiring restoration depending on the parts. Contact me for additional photos.

Hand delivery in Paris or insured Colissimo shipping. Contact me to determine the delivery terms.