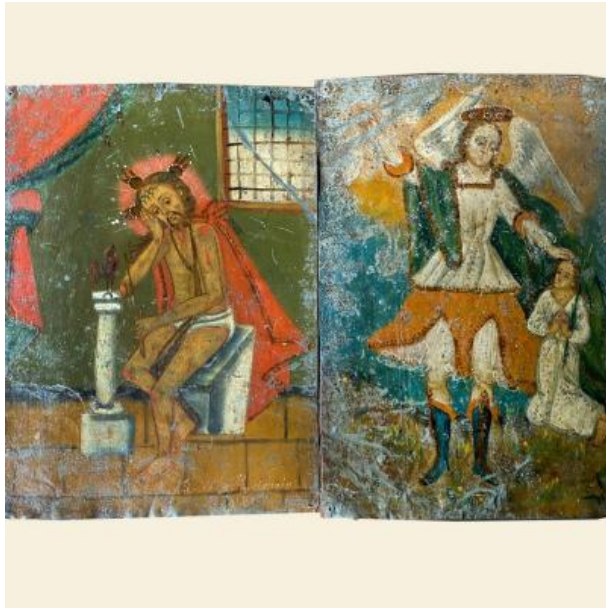




Pair Of Oil Paintings On Tin, South America, Late 19th Century



600 EUR

Period : 19th century

Condition : Bon état

Material : Oil painting on copper

Length : 28 cm

Width : 20 cm

<https://www.proantic.com/en/591478-pair-of-oil-paintings-on-tin-south-america-late-19th-century.html>

Description

A charming pair of oil paintings on tin, mounted on wood, from South America, dated to the late 19th century. These artworks, likely part of the popular religious art tradition of the region, depict two iconic scenes: Christ at the Column, showing Jesus tied to a column before His scourging, and The Guardian Angel, symbolizing spiritual protection and guidance.

Each painting measures 20 x 28 cm, providing a compact and harmonious format. The use of tin, an unconventional support, adds a unique charm to these works, typical of the folk art of the time and place. Mounted on wooden panels for protection and stability, these pieces have been preserved with care.

Dealer

Mémoires d'un âne

Antiquités-décorations

Tel : 04 90 20 63 15

Mobile : 06 51 67 38 23 / 06 72 40 44 67

5 avenue des 4 otages et à l hôtel Dongier

L'Isle-sur-la-Sorgue 84800

- o Period: Late 19th century, dated 188?
 - o Origin: South America
 - o Medium: Oil on tin, mounted on wood
 - o Subjects: Christ at the Column and The Guardian Angel
- o Dimensions: 20 x 28 cm each painting
 - o Condition: Good overall condition, with some signs of age-related wear

A beautiful pair of religious paintings, perfect for collectors of sacred art and South American folk art, bringing a touch of spirituality and history to any collection or interior decor.