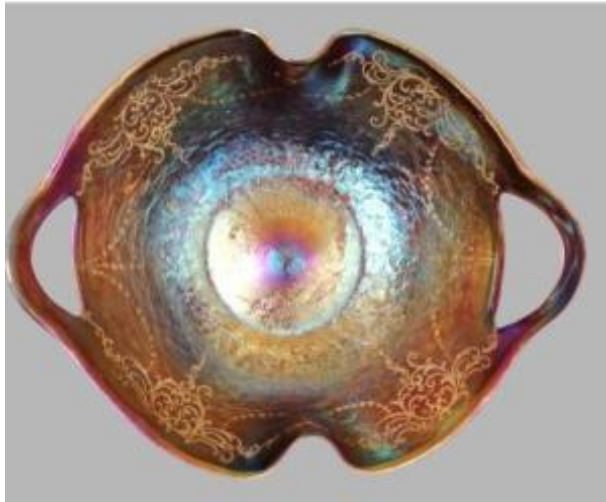




Glass Cup Attributed To Loetz



Description

This cup in lined and iridescent pink glass is probably a work of the workshops of Johann Loetz. This multi-lobed cut, has been worked with a tool, it is decorated with a decoration of garlands of flowers and gold foliage. Johann Loetz Witwe (1880-1940) was an important art glass manufacturer in Klostermühle, Bohemia, Austria - Hungary. The works of Johann Loetz are among the most outstanding examples of Art Nouveau. For more information, please feel free to contact us.

250 EUR

Signature : Johann Loetz

Period : 20th century

Condition : Très bon état

Material : Glass

Length : 28 cm

Width : 23 cm

Height : 10 cm

<https://www.proantic.com/en/969127-glass-cup-attributed-to-loetz.html>

Dealer

Aux Arts Décoratifs

Antiquités généralistes

Tel : 0247460356

Mobile : 0665977683

5, rue Jean-Bernard Jacquemin

Tours 37000